



NEWLANDS GOLF & COUNTRY CLUB

GOLF TOURNAMENT PACKAGES

Phone: 604-533-3288 (ext. 232)
Email: Samantha@newlandsgolf.com

MEET THE HEAD PRO

My mission as Head Professional is to provide my guests with service that exceeds their expectations while growing the game of golf.

I look forward to being a part of your memorable golf experience at Newlands Golf and Country Club.



SAMANTHA KIRK

Head Pro

Phone: 604-533-3288 (ext. 232)

Email: Samantha@newlandsgolf.com

MEET THE DIRECTOR OF GOLF

Thank you for considering Newlands to host your tournament. Our team at Newlands will ensure your day will be memorable for everyone involved!



COREY ANDERSON

Director of Golf

Phone: 604-533-3288

Email: Corey@newlandsgolf.com

Why Choose Newlands

For Your Next Golf Tournament

TOURNAMENT EXPERTS

Our experienced staff work with you from start to finish to ensure your tournament is a success. Let us do the hard work so you can prioritize enjoying the day with your group!

PREMIUM SERVICE

Our mission is to make your tournament memorable for everyone involved. We go above and beyond to make sure every detail exceeds your group's expectations.

PERSONALIZED TOURNAMENT PACKAGES

We cater to your budget, time constraints and group's preferences. Choose from our golf and dining options or let us tailor a custom package that fits best for your group.

BOOK YOUR TOURNAMENT IN 4 EASY STEPS



Determine Date and Guests

Establish your desired date, time and number of confirmed guests for golf and dining.



Select Your Golf Options

Choose between the 18-hole Championship Course or the 11-hole Executive Course for your group.



Choose Your Dining Option

Pick one of our dining options available. Please advise tournament coordinator of any dietary restrictions or allergies



Contract and Deposit

Sign the contract confirming the details of your tournament and pay the deposit to schedule the date.

GOLF COURSE OPTIONS



18-hole Championship Course

Full size golf course that offers stunning views and an enjoyable layout. Suited for intermediate golfers or beginners playing best ball. **Available Monday through Friday.**



11-hole Executive Course

Our Executive Course has reduced yardage and fewer holes. It offers a more relaxed golf experience that is best for beginner golf groups. **Available Monday through Sunday.**

GOLF FORMAT OPTIONS



CHAMPIONSHIP SHOTGUN

Full course rental of the Championship Course. No public golfers or members will be allowed on the course making it a private event for your group only. Group will start and finish at the same time (roughly).



CHAMPIONSHIP TEE TIMES

Groups will tee off the first tee consecutively, every 8 minutes. Each group will consist of 4 players (40 players = 10 groups every 8 minutes). Groups will finish at different intervals..



EXECUTIVE SHOTGUN

Full rental of the Executive Course (3.5 hours). No public golfers or members will be allowed on the course making it a private event for your group only. Group will start and finish at the same time (roughly).

Championship Shotgun Tournament

MINIMUM PLAYERS

128 players required for Championship Shotgun

*Shared power carts included in pricing

LENGTH OF TIME

Entire Championship Course will be rented to your group for 5 hours

PRICING

\$85* per golfer - Weekday morning (8:30 am start)

\$75* per golfer - Weekday afternoon (1:30 pm start)

\$95* per golfer - Weekend morning (8:30 am start)

\$85* per golfer - Weekend afternoon (1:30 pm start)



Championship Consecutive Tee Times

MINIMUM PLAYERS

24-80 players required for Championship consecutive times

*Shared power carts included in pricing

LENGTH OF TIME

Group is expected to complete their round 4.5 - 5 hours once they have tee'd off

PRICING

\$75* per golfer - Weekday morning

\$65* per golfer - Weekday afternoon (after 1:00 pm start)

\$95* per golfer - Weekend morning

\$85* per golfer - Weekend afternoon (after 1:00 pm start)



Executive 11-hole Shotgun Tournament

MINIMUM PLAYERS

Minimum 44 players required for Executive Shotgun

LENGTH OF TIME

Entire Executive Course will be rented to your group for 3.5 hours

PRICING

\$50* per golfer - Weekday morning

\$45* per golfer - Weekday afternoon

\$50* per golfer - Weekday morning

\$45* per golfer - Weekday afternoon



TOURNAMENT DINING OPTIONS



DELUXE BUFFET

\$39.99

Includes: Baron of beef with au jus, chicken coq au vin, lasagna, roast potatoes, rice pilaf, green salad, potato salad, garden vegetables and fresh dinner rolls



MR. A'S PATIO BUFFET

\$24.99 - \$34.99

Includes: Thursday and night Seafood Buffet, Friday and Saturday night Prime Rib Buffet and Continental Buffet on Sundays



BURGER & BREW

\$24.99

Includes a beef burger, served with fries and one pint of our house beer selections



BOXED LUNCH

\$14.99

Includes turkey/ham/veggie sandwich, chips and water. Perfect for an on-course snack during the round of golf.

TOURNAMENT ADD-ONS



SMOKIE / SANDWICH

\$5.99 ea

One smokie or sandwich per person. Prices are subject to change. Taxes and gratuities are not included.



IMPORT & COOLER TICKETS

\$6.99 ea

One import or cooler per person. Prices are subject to change. Taxes and gratuities are not included.



RENTAL CLUBS

\$24.99

Right and left handed sets available. We advise players to reserve well in advance. Prices are subject to change. Taxes and gratuities are not included.



POWER CARTS

\$39.99

Additional power carts are available. We recommend for players to call in advance for cart reservations. Taxes and gratuities are not included.

TOURNAMENT SERVICES PROVIDED



Contest Markers

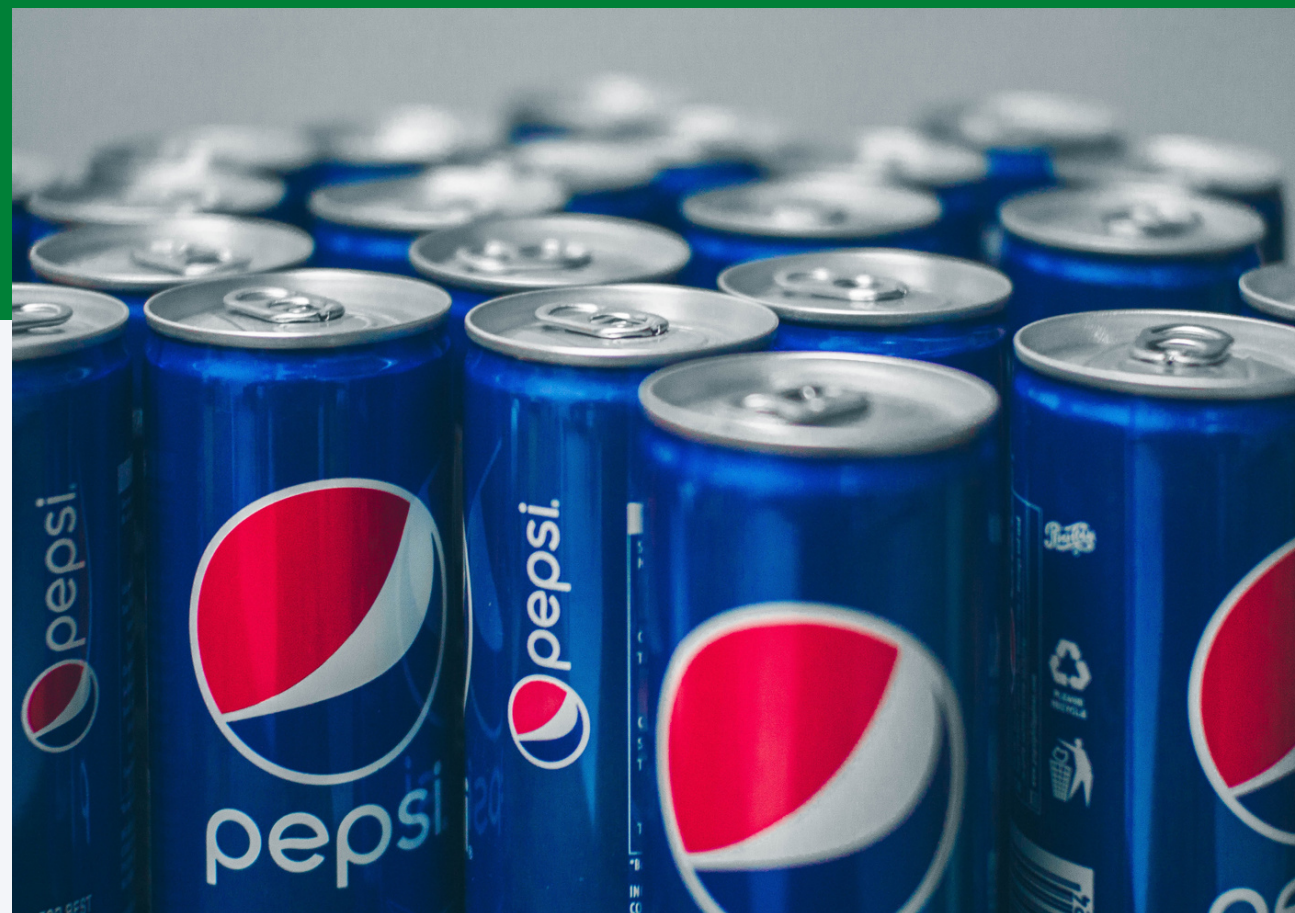
Up to 4 markers available for long drive or closest to the pin contests. Hole-in-one insurance also available, contact Corey or Samantha for more details.



Tent, Table and Chairs

All on-course setup must be handled by tournament organizers and volunteers (responsible for setup and take down).

TOURNAMENT SERVICES PROVIDED



Snack Shack & Beverage Cart

Additional food and beverages can be purchased on the course at the 10th hole snack shack or from or beverage cart attendant.



Custom Cart Signs

Carts will be labelled with the names of each group member for shotgun tournaments. It will also state which hole they are starting on.

Tournament Course Rules

- Dress code - dress pants, walking shorts, collared shirts are required. Swimwear, sleeveless shirts, ripped clothing are not permitted on the course.
- All groups may play with a maximum of 4 players per group. Groups of 5 or more are not permitted at any time.
- No outside alcohol is permitted on the course. Alcoholic beverages are available in the Pro Shop, snack shack or beverage cart.
- Inclement weather - tournaments will play on the scheduled date unless the course is deemed unplayable by the course Superintendent.
- Each golfer must have their own set of golf clubs - rentals are available in the Pro Shop at an added cost.
- Course and cart liability must be signed by the organizer or each individual golfer. Credit card must be provided for liability.
- Tournament organizers are responsible for any on-course tournament setup and takedown for sponsors and volunteers.



TOURNAMENT CONTRACT:

Please forward to golf@newlandsgolf.com



Tournament Name: _____

Tournament Day/Date: _____

No. of Golfers: _____ 1st Tee Time: _____ No. of Dinners: _____ Dinner Opt: _____

Tournament Organizer: _____ Employer: _____

Cell: _____ Work: _____ Email: _____

Alternate Contact: _____ Employer: _____

Cell: _____ Work: _____ Email: _____

Invoice Address: _____

Attention: _____

TOURNAMENT TERMS & PAYMENT PROCEDURE:

- A deposit of \$500.00 is required to secure any tournament as outline above.
- The deposit will be held by Newlands as security. If needed, it will be used to cover any incidental charges outside of guaranteed numbers, or, if no incurred charges take place, it will be refunded within 7 days of the event.
- As host, you will be held responsible to ensure Newlands course rules are obeyed at all times.
- As host, you will be held accountable and charged for any damages or loss of club property caused by you or your guests.
- Full payment is required day of event – Newlands gladly accepts cash, credit or cheque.

I, _____, hereby authorize Newlands Golf and Country Club to process the required deposit and payment charges for the tournament as outlined above.

Credit Card Number: _____ Expiry: _____

3 Digit Security Code: _____ Name on Card: _____

Billing Address: _____

Signature of Cardholder: _____ Date of Authorization: _____

Client Name: _____ Coordinator Signature: _____

Client Signature: _____

Date of Signage: _____

Newlands Tournament Contract

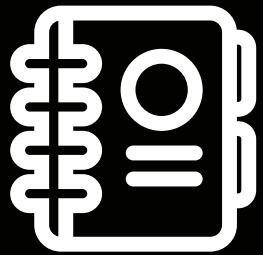
The following contract must be submitted along with a \$500.00 deposit in order for your tournament to be scheduled.

\$500 deposit will be used towards final invoice unless damages are incurred during the tournament.

Tournament invoice will be determined based on the number of golfers and guests expected for dining.

Tournament Timeline

Key Planning Intervals



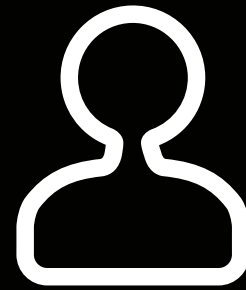
3 MONTHS OUT

- Check-in with organizational progress
- Update expected guests



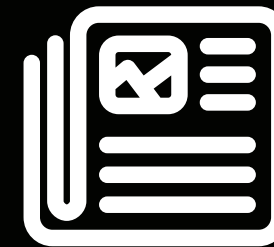
1 MONTH OUT

- Food selections confirmed with guest count
- Confirm any add-ons



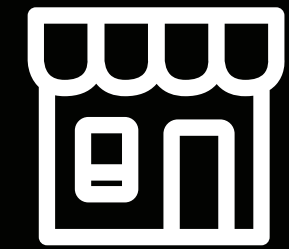
2 WEEKS OUT

- Confirm number of golfers
- Acquire list of players
- Confirm contests and set-up



1 WEEK OUT

- Invoice sent based on guest numbers confirmed
- Any minor changes for food and golf



3 DAYS OUT

- Invoice to be paid
- Drop off for signage or sponsors

Reach Out To Samantha Kirk

EMAIL ADDRESS

samantha@newlandsgolf.com

PHONE NUMBER

604-533-3288 (ext. 232)

